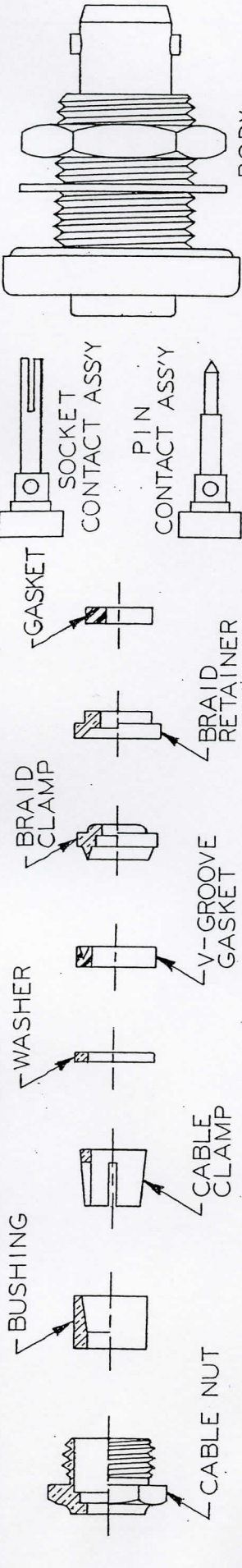


REVISIONS

SYM.	DESCRIPTION	DATE	APPROVAL
------	-------------	------	----------

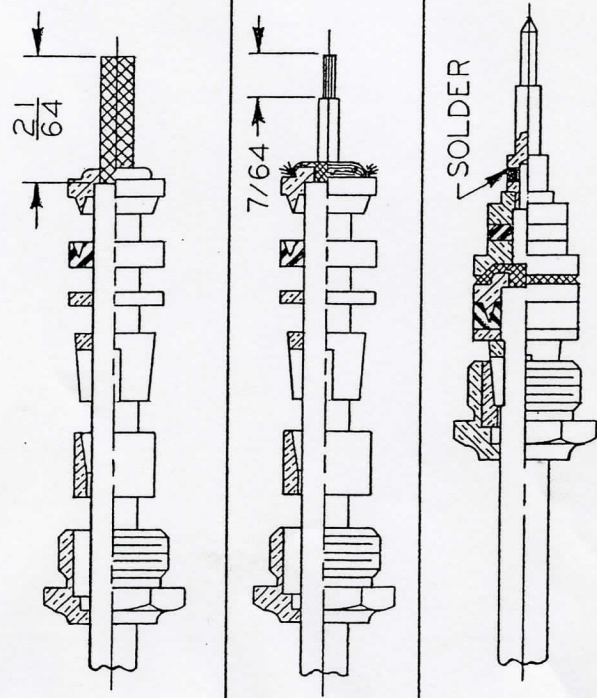
IMPORANT
 ANY INFORMATION SUPPLIED IN ANY WAY WHICH PERTAINS TO THIS PART SHALL BE TREATED AS PROPRIETARY AND ITS USE OR DISCLOSURE IN WHOLE OR PART FOR PURPOSES OTHER THAN DIRECT FULFILLMENT OF CONTRACTS WITH THIS COMPANY, WITHOUT ITS WRITTEN CONSENT IS PROHIBITED.



1. Cut cable off square and remove outer jacket to dimension shown. Slip cable nut, bushing, cable clamp, washer and gasket (v-groove as shown for 69 series - flat gasket on 59 series) over outer jacket of cable. Position braided clamp with inside shoulder against shoulder of outer jacket.

2. Comb out braid and fold back over braided clamp and trim off excess braid as shown. Trim dielectric from center conductor to dimension shown.

3. Position braided retainer and small gasket as shown. Push both tight against the braided clamp and solder contact assembly to center conductor. Insert finished cable assembly into connector body, tighten and torque cable nut 8 to 10 inch pounds.



UNLESS OTHERWISE SPECIFIED		ITEM	REQD.	PART NO.	DESCRIPTION	MAT'L	MAT'L SPEC.	UNIT WT.		
DIMENSIONS ARE IN INCHES		TITLE ASSEMBLY INSTRUCTIONS TED 59 AND 69 SERIES PANEL MOUNT CABLE JACK (SHIELDED CABLE)							 TED MANUFACTURING CORP. 11415 JOHNSON DRIVE SHAWNEE, KANSAS	
TOLERANCES ON										
FRACTIONS	DECIMALS									ANGLES
± 1/64	± .005									± 1°
REMOVE ALL BURRS & SHARP EDGES		CUSTOMER APPROVAL								
PLATE:		APPR. _____ DATE _____ APPR. _____ DATE _____								
NICKEL _____		SCALE _____ PLATING AREA _____								
SILVER _____		DWG. NO. 700126 REV. A								
GOLD _____		700126								