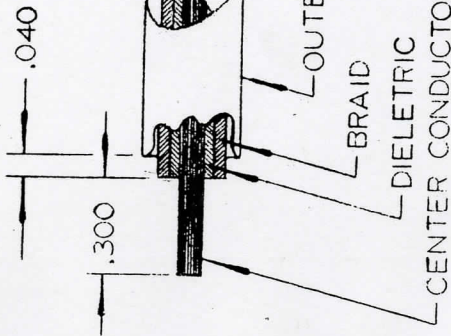
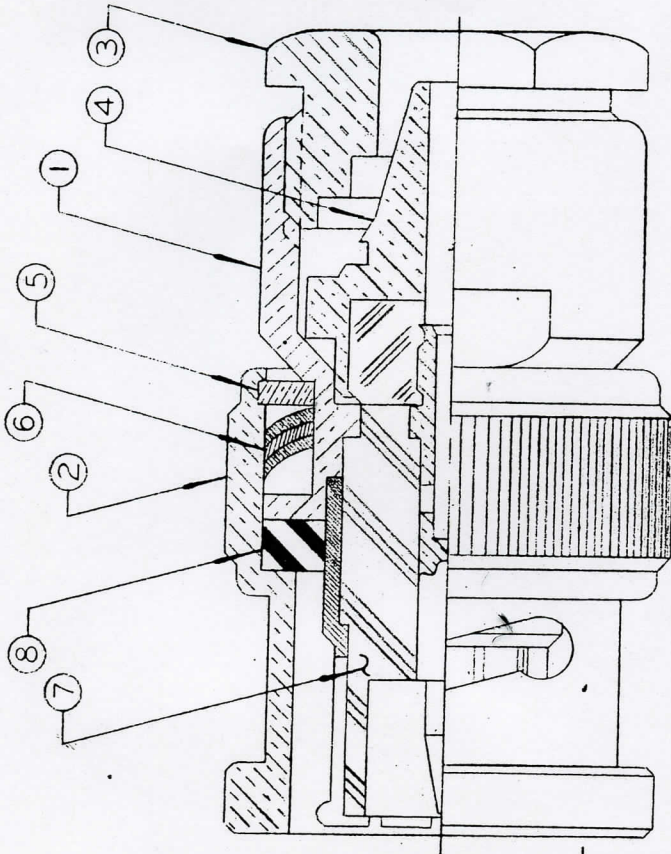


IMPORTANT

ANY INFORMATION SUPPLIED IN ANY WAY WHICH PERTAINS TO THIS PART SHALL BE TREATED AS PROPRIETARY AND ITS USE OR DISCLOSURE IN WHOLE OR PART FOR PURPOSES OTHER THAN DIRECT FULFILLMENT OF CONTRACTS WITH THIS COMPANY, WITHOUT ITS WRITTEN CONSENT IS PROHIBITED.



1. Trim cable to Dim shown.
2. Twirl center conductor slowly to loosen braid from Dielectric.
3. With nut on cable insert contact assembly between Dielectric and braid and push until center conductor shows through inspection hole.
4. Solder or Crimp (Tool #MS3191-3) center conductor to contact. (When crimping; set tool for #20 contact.)
5. Insert into connector body and tighten cable nut to 40in-lbs.

REVISIONS

Sym.	Description	Date	Approval
B.	ADDED CABLE DIMS & ASS'Y. INSTRUCTIONS	8-7-74	SEARS

ITEM	REQD.	PART NO.	DESCRIPTION	MAT'L	MAT'L SPEC.	UNIT WT.
LIST OF MATERIAL						

UNLESS OTHERWISE SPECIFIED
 DIMENSIONS ARE IN INCHES
 TOLERANCES ON FRACTIONS DECIMALS ANGLES
 $\pm 1/64$ $\pm .005$ $\pm 1'$
 REMOVE ALL BURRS & SHARP EDGES
 PLATE: _____
 NICKEL _____
 SILVER _____
 GOLD _____

DR. SEARS	DATE 3-26-74
CK.	DATE
APPR. RAZ	DATE 3-28-74
APPR.	DATE
CUSTOMER APPROVAL	
APPR.	DATE
APPR.	DATE

TITLE

CABLE PLUG



TED MANUFACTURING CORP.
 11415 JOHNSON DRIVE
 SHAWNEE, KANSAS

DWG. NO. 4-10-107
REV. B

SCALE	PLATING AREA
-------	--------------